



### MIDGLEY OPEN GARDENS

**Sunday 1<sup>st</sup> August – Yorkshire Day! 11am – 5pm**

**Please tell your friends and family and come and support our village, enjoy the gardens, views and delicious homemade refreshments. What better way to celebrate Yorkshire Day!**



This is a scaled down event this year due to the uncertainty of Covid 19 restrictions.

However we still have 16 gardeners opening their garden to visitors on that day.

Thank you to them for their generosity and hard work.



**We need volunteers to help advertise the event, bake cakes and on the day, sell tickets and help to serve light refreshments in some gardens.**

**If you are able to give a hand, please contact Jennifer Vale on 07906 459904 or email [jen.vale@yahoo.co.uk](mailto:jen.vale@yahoo.co.uk)**

**Cake Bakers** bring your baking to the Community Room by 9.30 on Sunday 1<sup>st</sup>.

**Please no fresh cream or chocolate iced cakes.**

**\*Thanks to John Halmshaw for providing plants for the troughs in the village.**

#### Environmental Volunteering Activities



Thank you to all you wonderful people (and gnomes) who turned up to help with Woodland Management in the wood next to Radcliffe Lane.

Those trees will be breathing more easily now. Also thanks to the hardy folk who braved the inclement weather to bash Balsam in Brearley Woods. You have another chance to try out this local 'sport' of

**Balsam Bashing on Tuesday 3rd August.  
Meet at 6pm at Lacey Hey. Bring Gloves.**

#### Coffee Morning

Every Thursday from 10am to 12.30. There are always delicious home made cakes, scones, lovely coffee and a warm welcome. Please come along if you are feeling well and are not displaying any cold-like symptoms.

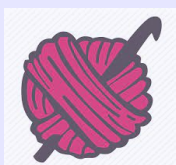
We ask you to wear a mask when moving around and sign in for Track and Trace. We also welcome volunteers who would like to help serve or/and bake for this popular weekly event.

For more information contact Frances Tighe on 882954

#### CRAFT, COFFEE, CHAT AND CAKE

If you like crafting, knitting, sewing, drawing or painting and convivial company, then come along to Craft, Coffee (or tea) Chat and Cake. Every 2<sup>nd</sup> Tuesday of the month 2- 4pm Cost £1.50 in the Community Room.

As well as bringing along your usual art or craft to do, in the next few months you will have the opportunity to:

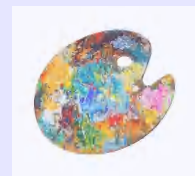


Learn to crochet – August

Learn to Knit – September

Make a Macrame plant hanger – October

Crafts for Christmas – November



For further details, contact Jean Tallis on 882394 or [jean.tallis@gmail.com](mailto:jean.tallis@gmail.com)



For items to be included in the next Newsletter, please contact Sandra 883388 or email [sandyscott21@ymail.com](mailto:sandyscott21@ymail.com)  
Advertisements in the Newsletter cost £5 per insertion for an approx 8cm x 5cm block, or contact Sandra to discuss your requirements.

\* SHOP NEWS \*

\* SHOP NEWS \*

\* SHOP NEWS \*

The shop continues to carry on providing a service to the community. We have had a number of volunteers 'pinged' but others have stepped up, sometimes at very short notice. A big thankyou to all our volunteers.

Customers will have noticed that new signs went up in the shop on Monday 19<sup>th</sup> July. We are encouraging both customers and volunteers to continue to wear face covering in the shop. It is felt that whilst infection rates remain high, it is one way of helping to protect each other. Hopefully this will be a short term measure.



\* Fresh fruit and vegetables provided by Valley Veg are delivered on Wednesdays and Fridays.



\* Please note that the shop will be opening extended hours from 9am to 5pm on Sunday 1<sup>st</sup> August for Open Gardens. Tickets for sale on the day.



\*Just Jenny's Ice Cream, Cold Drinks, Snacks, Sweets and Biscuits.

## Looking after our local landscape

We are very fortunate to live in a lovely area with a multitude of walking, cycling and running routes for us to enjoy. It is the farmers and landowners who maintain this landscape for us while at the same time depending on the land for their livelihood. The Countryside Code (2004) is a set of rules for visitors to rural and especially agricultural regions of the United Kingdom. We all should follow the code.

The  
Countryside  
Code



Your guide to enjoying parks and  
waterways, coast and countryside

### Respect everyone

- be considerate to those living in, working in and enjoying the countryside
- leave gates and property as you find them
- do not block access to gateways or driveways when parking
- be nice, say hello, share the space
- follow local signs and keep to marked paths unless wider access is available

### Protect the environment

- take your litter home - leave no trace of your visit
- take care with BBQs and do not light fires
- always keep dogs under control and in sight
- dog poo - bag it and bin it - any public waste bin will do
- care for nature - do not cause damage or disturbance

### Enjoy the outdoors

- check your route and local conditions
- plan your adventure - know what to expect and what you can do
- enjoy your visit, have fun, make a memory

[www.gov.uk/countryside-code](http://www.gov.uk/countryside-code)



Landowners and managers have responsibilities to keep rights of way clear. They can help visitors:

- by keeping paths clear and waymarks and signs in good order and up to date
- where there is public access through a boundary feature such as a fence or hedge, creating a gap if they can - or use an accessible gate or, if absolutely necessary, a stile.
- By giving clear, polite guidance where it's needed.

