

### SPAW SUNDAY 7th MAY

Midgley residents have once again been busy preparing for and dressing their local wells. The theme this year is Nursery Rhymes and Fairy Tales.

Rema Sim will be leading the walk which stops off at each dressed well where walkers will be entertained by a recitation or song.

**Please meet at the Pinfold in Chapel Lane at 11 am.**



The walk is approximately 1.5 miles and does involve some uphill walking and clambering over stiles. It will also skirt part of the side of the moor, and so appropriate footwear and clothing is recommended.

Bacon butties etc will again be served in the Community Room from 11am. Dock pudding, that well known local delicacy will also be available, courtesy of Rema—Midgley's own Dock Pudding Queen.

EVERYONE WELCOME—PLEASE COME ALONG

**FREE  
ENTRY**

### MIDGLEY VILLAGE FETE

**SATURDAY 10TH JUNE AT THE  
RECREATION GROUND, GREEN LANE.**

**STARTING  
AT 1 pm**

ALL PROFITS GO TO MIDGLEY  
COMMUNITY FORUM

A BRILLIANTLY OLD FASHIONED AND FUN FILLED  
DAY OUT FOR ALL AGES

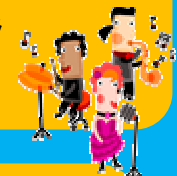


**GAMES, STALLS, LIVE MUSIC  
FELL RACE, CHILDRENS RACES,  
TERRIER RACES, STRAW RACES,  
TEA TENT, BEER TENT,**

**WELLY WANGING, TUG O'WAR  
AND PLENTY MORE BESIDES.**



THE ARENA EVENTS AND STALLS WILL CLOSE  
BY 5PM BUT PLEASE DON'T GO AS THE BEER  
TENT WILL STILL BE SERVING FROM 5pm  
ONWARDS. LIVE BAND MUSIC WILL BE  
PLAYING IN THERE AND KEEPING  
THE FUN GOING.



PLEASE NOTE; that GREEN LANE leading to the recreation ground will be closed to traffic on SATURDAY 10th JUNE FROM 12.30pm to 5pm. This will not affect those residents who park behind their homes nearby. However, everyone setting up for the fete needs to be aware that any vehicles not moved from the rec by 12.30pm will have to remain in place until 5pm.

Again there will be limited disabled parking for blue badge holders and stewards will be on hand to help with this if needed.



## MIDGLEY FETE



As previously requested, the following are all wanted—clean washed cuddly toys, bottles and jars for the bottle tombola and chocolate bars/boxes/biscuits etc for the chocolate tombola stall.

Boxes will be placed in the shop to receive your contributions. Rema and Linda will also be calling around the village to collect donations in early June.

If you have any queries relating to this, then please contact Linda on 885072.

Please note that bric a brac is not required.

## HOME BAKERS



We need you to supply the TEA TENT

The Tea Tent could not be the success it always is without the generosity of Midgley's bakers who never fail to delight us with their bountiful and scrummy offerings.

Contributions may be left in the Community Room from Friday 9th June to Saturday 11 am. You may also take them straight to the Tea Tent on the day, but please be aware of the 12.30 road closure.

Any queries, please contact Jennifer Vale on 885466



## CALLING ALL GARDENERS

If you have any spare plants, we should be pleased to have them to sell on the Plant Stall. These can either be brought to the plant stall on the day or left at Lane Ends Farm prior to the Fete.

Please make sure they are labelled, so we know what they are! Contact Sandra on 883388 for details.

## URGENTLY WANTED



VOLUNTEERS NEEDED FOR SETTING UP AT THE REC ON FRIDAY EVENING FROM 6 pm AND SATURDAY MORNING FROM 8 am. WOULD ALL VOLUNTEERS PLEASE MEET AT THE REC. THE MORE WHO TURN UP, THE LIGHTER THE LOAD FOR EVERYONE.



VOLUNTEERS FOR SUNDAY MORNING TO DISMANTLE AND CLEAR UP ARE ESPECIALLY NEEDED. PLEASE MEET AT THE REC AT 10 am.

By Sunday, some of our volunteers will have been working really hard for several days and will be extremely tired, so it will be much appreciated if there is a good turn out to help.

Please contact Jenifer Vale on 885466 if you have any queries relating to this. Jennifer will also be pleased to hear from you if you would like to volunteer in any other capacity.



## PUB NIGHT

in the Community Room

The next one will be on Friday 19th May when the bar will be open from 8pm to 11 pm

All welcome— just come along



## QUIZ NIGHTS

FRIDAY 5th MAY

FRIDAY 2nd JUNE

8pm in the Community Room

Entry £5 to include supper.

Put your name down in the shop when you see the posters go up



## VILLAGE COACH TRIP TO WHITBY



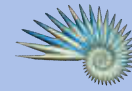
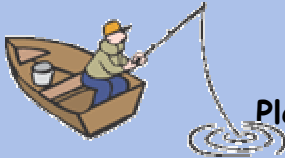
SATURDAY 8TH JULY

Leaving Midgley bus terminus at 8am prompt and Whitby at 5pm  
Stopping en route at the Highwayman for bacon butties and drinks.

On board quizzes and bingo.

An old fashioned day out at the **seaside** ★

Tickets Adults £15 Children £7



Please put your name down in the shop.



### WINE IN THE SHOP

First some bad news.



Wine prices have had to go

up for two main reasons. The increase in duty (not in the budget, but previously announced), and the weak pound against other currencies.

We have had to pass these price rises on unfortunately.

However the **GOOD NEWS** is that we have a number of wines at £6.50 or less.

These are either bin ends or remaining stock.

We will continue to try to get some excellent wines at good prices alongside the old favourites.

These are often 'one offs' and only there as long as stocks last.



Finally can we highly recommend a white wine which is an award winner at a reasonable price.

LES MAINS NOIRES is a cracking Grenache Blanc.

Give it a try.



## BimBoyz music

baby - toddler - preschool

interactive music classes

WEDNESDAYS at 9:30am

The dinosaurs are coming to Midgley Community Room  
classes begin May 10th



For more info and to book your place email [bimbommusic@gmail.com](mailto:bimbommusic@gmail.com)  
or message the fb page @bimbommusic :)



### BREAKFAST IN THE COMMUNITY ROOM



SATURDAY 13TH MAY

9.30am to  
12.30pm



Pink Water Lily Roots for Sale.

£5.00 each

Proceeds for Community Funds

Contact Peggy Tel. 882452

For items to be included in the next newsletter please contact Sandra Scott on 883388  
or email [sandyscott21@ymail.com](mailto:sandyscott21@ymail.com)